

Fully integrated in-house manufacturing facilities



Spinning



Dyeing



weaving

Backing



Finishing



Core Competence

- Fully integrated in-house manufacturing facilities
- Innovative Products
- Process Capabilities
- Product Diversification
- Continuous up gradation of Quality levels
- Commitment to Environment & Society
- Business Ethics

List of Clientele in USA

- CRATE & BARREL
- DPSTC
- FIBER WORKS
- YARAGHI
- PINECONE HILL
- BALLARD
- LOWES

List of Clientele in Europe

- IKEA Sweden
- ALTERNATIVE FLOORING- UK
- HEADLAM UK
- LINER Austria
- HC TAEPPER Denmark
- JOHN LEWIS - UK

Natural Fibers - what are they & why use them?

Natural fibers from plants and animals play an increasing role in our lives, not only in ethical clothing and other textiles, but in Carpet & rugs also.

Natural fibres come from natural sources; cellulose from plants and protein from animals. Fibres obtained from other sources such as petrochemicals are manufactured and called synthetic fibres. Wool, cotton, Jute & sisal are examples of natural fibres, while acrylic, polyester and nylon are examples of synthetic fibres.

Extraweave makes rugs and carpets in natural fibres like Jute, sisal & wool

Jute (*Corchorus capsularis* & *C. olitorius*)

Jute- a vegetable soft fiber is known as the 'Golden Fibre' due to its golden brown color and its importance. In terms of usage, production and global consumption, jute is second only to cotton. Jute is environmentally friendly as well as being one of the most affordable fibers; jute plants are easy to grow mostly in India & Bangladesh.

The fibres can be extracted by either biological or chemical retting processes. Biological processes are more widely practiced. Biological retting can be done by bundling jute stems together and soaking in water to help separate the fibres from the stem before stripping. After the retting process, the stripping process, non-fibrous matter is scraped off, leaving the fibres smooth and fine.



Jute basic rugs

Weaves

Boucle
Panama
Herringbone

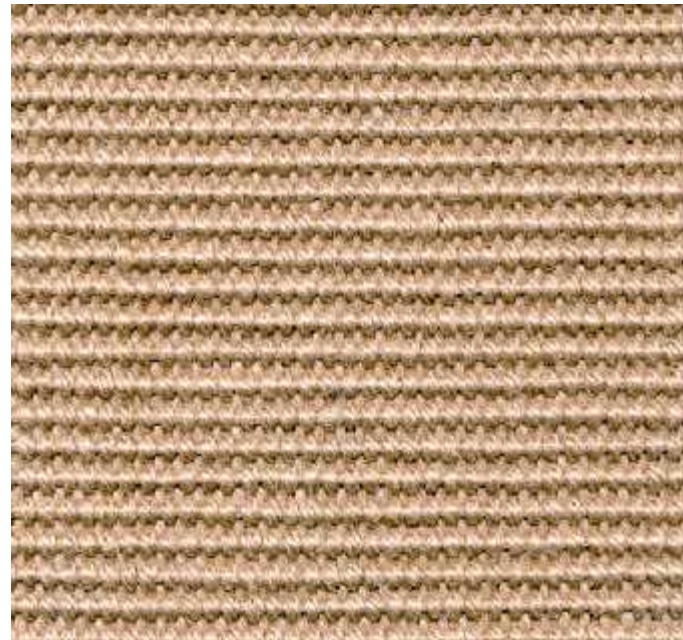
Specification

1200- 1400 gsm

Slack- 100% Jute
Weft- 100% jute
Latex backed

Advantage

Custom sizes
More weave options
Bio- degradable
Antiskid backing



Jute basic rugs

Specification

1700 gsm

Slack- 100% Jute

Weft- 100% jute

Latex backed

Advantage

Custom sizes

More weave options

Bio- degradable

Antiskid backing

Polyester border



Jute basic color rugs



Specification

1200- 1400 gsm

Slack- 100% Jute

Weft- 100% jute

Latex backed



Print on Jute



Advantage :- Any patterns can printed on jute base with light fast dyes to create distinct and elegant designs to suit any décor.

Print designs



Print designs



Jute natural jacquard rugs

Specification

1700 gsm

Slack- 100% Jute

Weft- 100% jute

Latex backed



Advantage

Custom sizes

Design options

Bio- degradable

Antiskid backing

Jute natural jacquard rugs



Advantage

- Custom sizes
- Design options
- Bio- degradable
- Antiskid backing

Specification

- 1700 gsm
- Slack- 100% Jute
- Weft- 100% jute
- Latex backed
- 4 side surged

Jute natural/ color jacquard rugs



Specification

1700- 2100gsm
Slack- 100% Jute
Weft- 100% dyed jute
Latex backed

Advantage

Custom sizes
Design options
Color options
Bio- degradable
Antiskid backing





Jute dyed jacquard rugs

Specification

2100gsm
Slack- 100% Jute color
Weft- 100% jute color
Latex backed

Advantage

Custom sizes
More Design
Color options
Bio- degradable
Antiskid backing



Sisal Fibre

Sisal fiber is obtained from the leaf of **Agave** plant a native of Mexico, which grows in Brazil and East Africa. It is usually obtained by machine decortications in which the leaf is crushed between rollers and then mechanically scraped. The fibre is then washed and dried. Once it is dried the fibre is mechanically double brushed. The lustrous strands, usually creamy white, average from 80 to 120 cm in length and 0.2 to 0.4 mm in diameter.

The higher-grade fibre after treatment is with high sheen and stability converted into yarns and used in the carpet industry.



Sisal thin jacquard rugs



Specification

1800 gsm
Slack- 100% sisal
Weft- 100% jute
Latex backed

Finish options

1. 4 side surged
2. Stitched border with polyester tapes.

Advantage

Durable
Custom sizes
More Design options
Color options
Bio- degradable
Sound absorbent
Antiskid backing



Sisal patterns



Thicker sisal jacquard rugs

Specification

2400gsm

Slack- 100% sisal

Weft- 100% sisal

Latex backed

Finish- 4 side surged



Advantage

Durable

Custom sizes

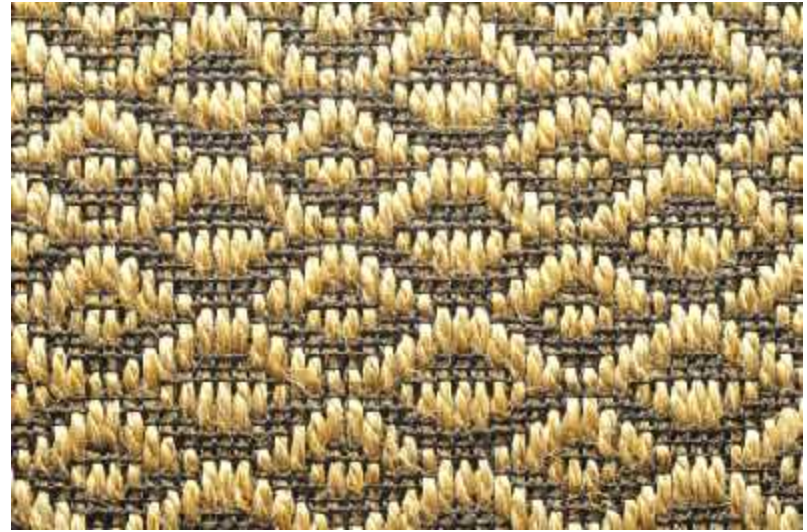
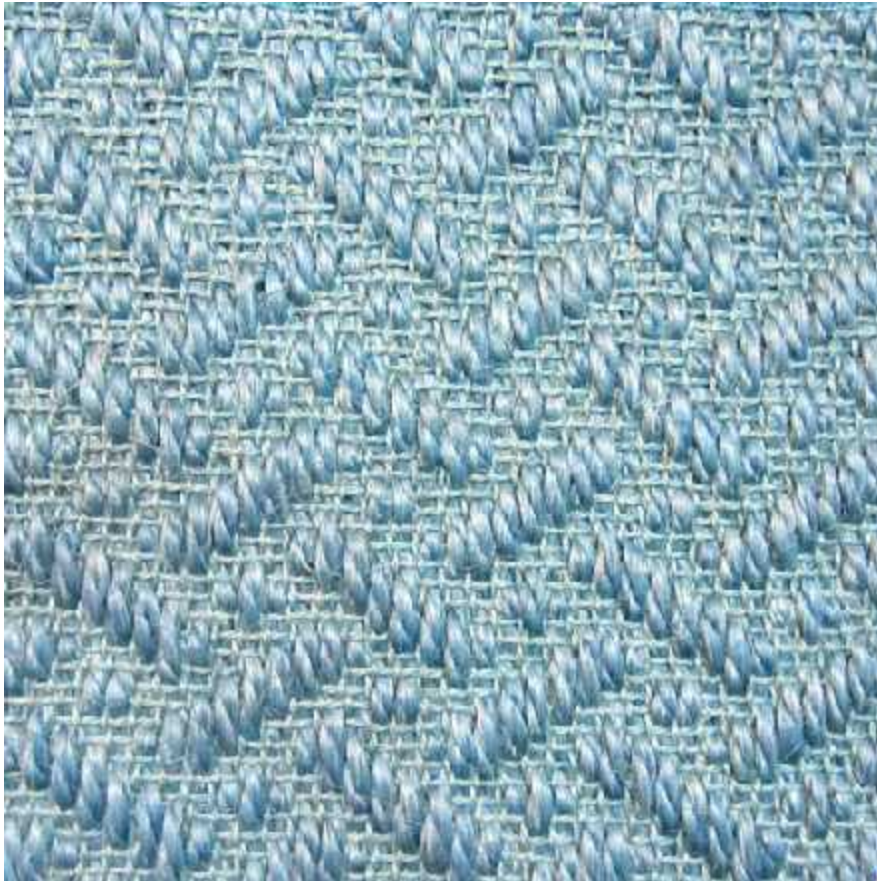
Color options

Bio- degradable

Sound absorbent

Antiskid backing

Sisal patterns



Wool

Wool is the textile fibre obtained from sheep and certain other animals, including cashmere from goats, mohair from goats, angora from rabbits, and other types of wool from camelids

The quality of wool is determined by its fiber diameter, crimp, yield, color, and staple strength. Fiber diameter is the single most important wool characteristic determining quality and price. Merino wool is typically 3–5 inches in length and is very fine (between 12 and 24 microns). The finest and most valuable wool comes from Merino hogget.



Wool rugs

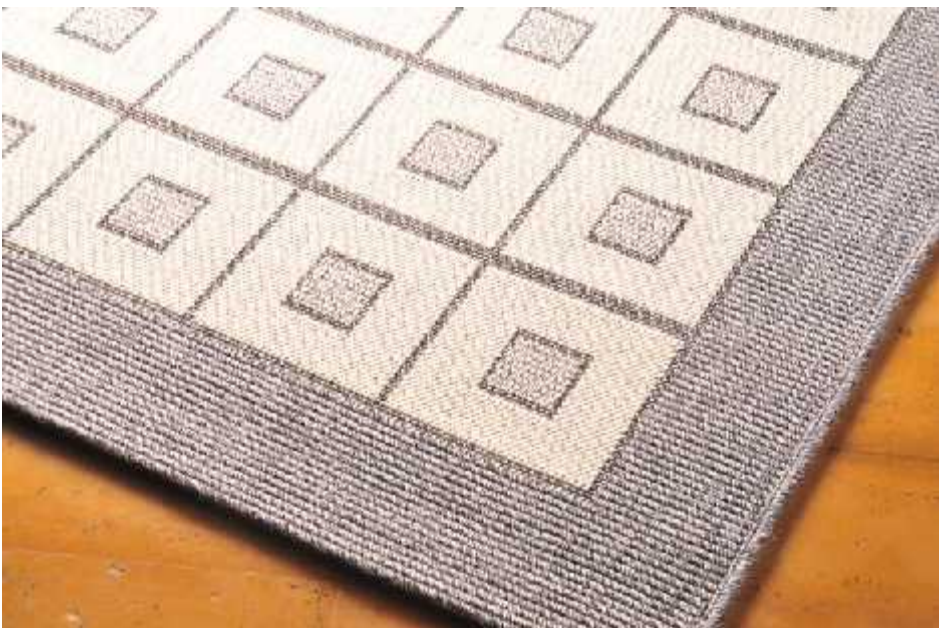


Specification

2000gsm
Slack- 100% wool
Weft- 100% jute
Latex backed

Advantage

Warm look
Custom sizes
Color options
Bio- degradable
Antiskid backing

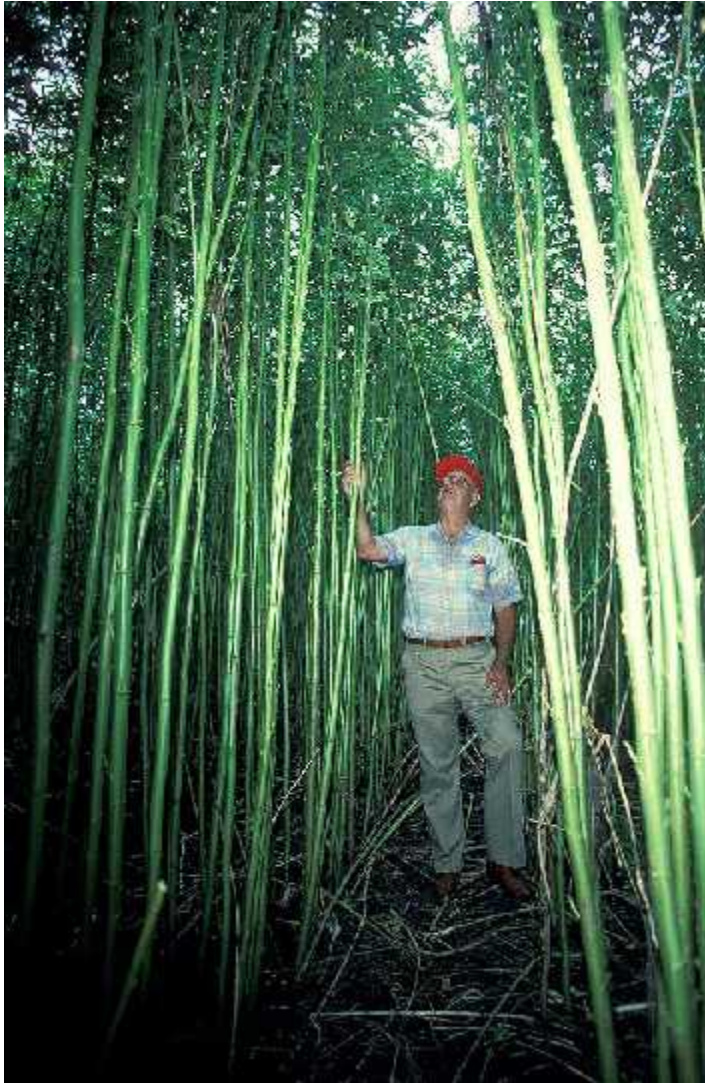




Wool rugs



KENAF



We are working with a new fibre called KENAF. This is an annual or biennial herbaceous plant growing to 1.5 to 3.5m height. The fibres in KENAF are found in the bast (bark) which is coarse and core (wood) which is fine . Fibre constitutes 40% of the plant. The fibre is very similar to Jute. It is cultivated in India, Bangladesh, USA, Indonesia, Malaysia, Vietnam, Thailand and Africa.

USP

- Name KENAF is new in the market as opposed to Jute which is generally known in the market for use as sacking material and considered an inferior fibre in the floor covering industry.
- KENAF can be sold at higher prices as it is an unknown fibre that can be promoted as an exotic renewable fibre.
- Though looking rather similar to jute it is far stronger and more resilient fibre.
- It is available in various beautiful shade of grey and gold.

We are in the process of testing the properties of the fibre and should have the samples to show both in fine and heavy weave by end of August.

KENAF AND THE ENVIRONMENT

- Kenaf plant absorbs CO₂ from the atmosphere more than any other crop - about 1.5 tons of CO₂ is needed for a production of 1 ton of dry matter of Kenaf. It means that every hectare of Kenaf consumes 30-40 tons of CO₂ for each growing cycle
- Figures: during a single growing cycle, each hectare of Kenaf consume the amount of CO₂ that exhaust from 20 cars in whole year.
- Since no chemical pest control is needed, neither toxic nor synthetic products should be applied during growing cycle, hence growing Kenaf benefits the eco-system.
- Kenaf plant can absorb toxic elements, such as heavy metals from the soil.
- Industrial products made with Kenaf fibers instead of synthetic fibers can be recycled.
- Very important aspects for automotive & construction industries.
- Kenaf core can be applied as soil remediation in case of hydro carbonates infestations.
- The government of USA is actively promoting the planting of Kenaf as land cover due to all the above scientifically proven benefits.

PET'S Range



LYOCELL/TENCEL - a new carpet and rug fiber





Lyocell is a sustainable fibre, regenerated from wood cellulose.



Advantages

- Eco Print : Made from the natural cellulose found in wood pulp and is fully biodegradable.
- Colour Rich : Lyocell was created with color in mind, because of the fibers' high absorbency. The fibre can be dyed to high quality standards.
- Anti-Bacterial : Due to its moisture management, Lyocell is also anti-bacterial.
- Feel of Yarn : Similar to rayon in feel. Soft, breathable, lightweight. Lyocell has an extremely smooth, soft surface that ensures perfect rug stability.
- Great for sensitive skin : Lyocell's smooth fiber surface feels soft and supple against the skin and it's a great fibre for sensitive skin.
- Versatile : This eco fibre can be finished from a suede-like softness to a silky smooth finish.
- Durable : This super fibre can hold up to a beating when both wet and dry and is most conveniently resistant to wrinkles.

Care & Maintenance :

Easy care and maintenance. Since it is resistant to staining , stains can be wiped off with wet cloth. Alternatively this rug can be flat washed using mild detergents and hose wash. Flat dried outside.

KNIPSA BASKET



COFFEE BAGS



Social Commitment

At Extraweave it's not only business, we believe that building a better tomorrow is everyone's responsibility. Out of this social commitment our group founded the KVM Trust. A major social welfare organization that patronizes, among a host of other charitable institutions.

- Free school for mentally challenged children.
- Free pain and palliative care centre.
- Free drug and alcohol de-addiction centre.
- Free counseling for families having cerebral palsy affected children.



Thanks